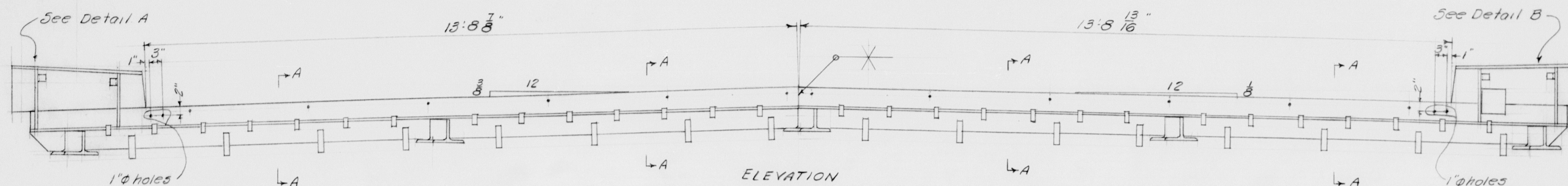
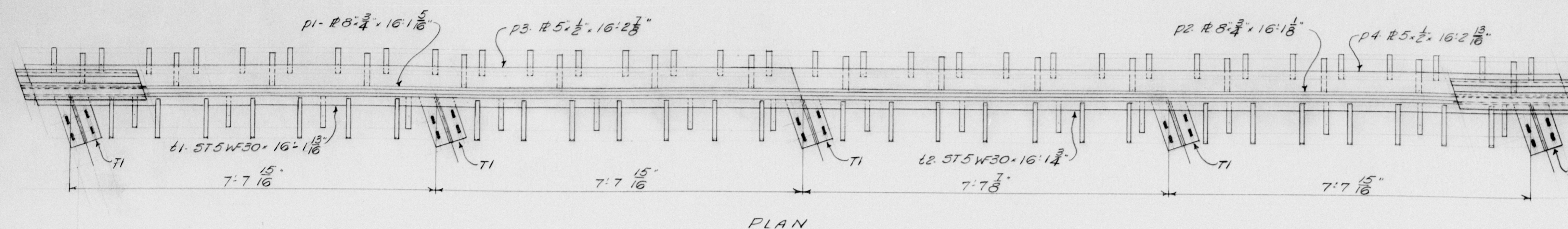


NOTES:  
Field Connrs. Welded  
Holes: 1/8"  
Paint: Red Lead unless noted

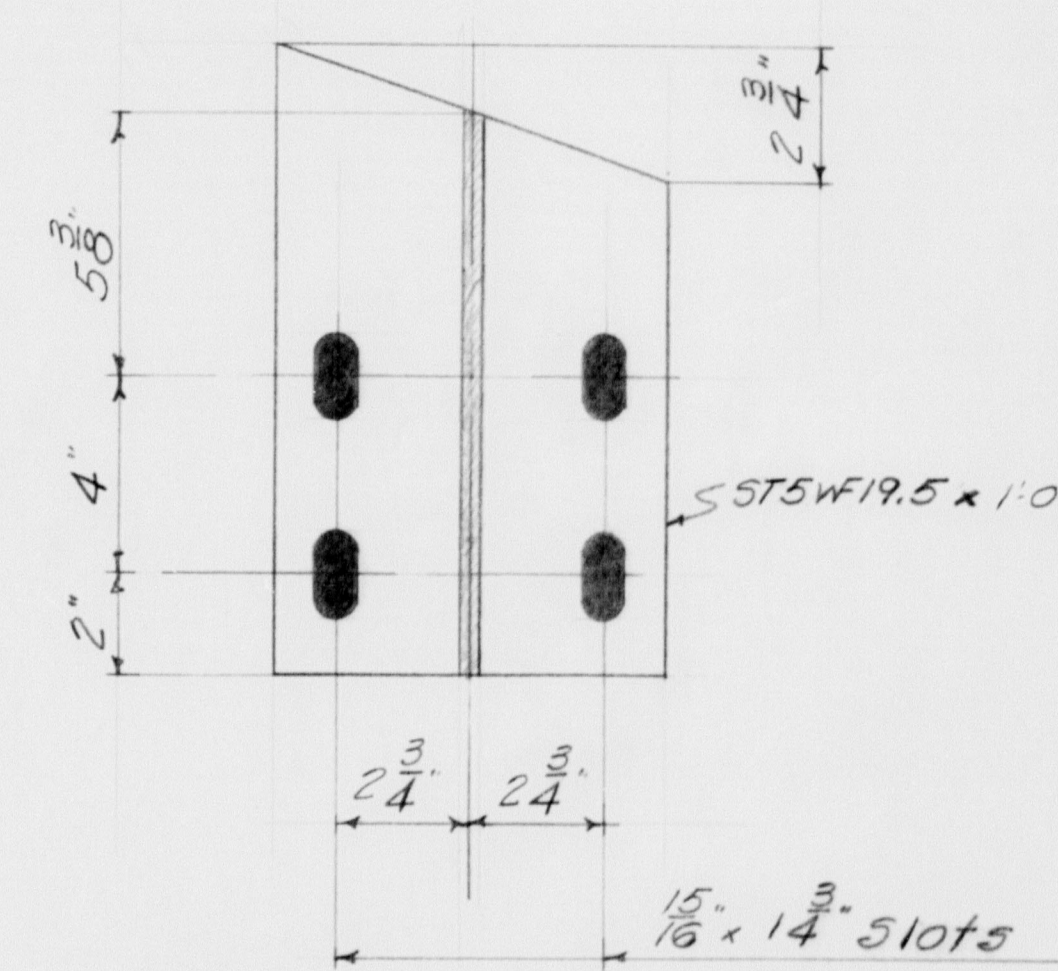
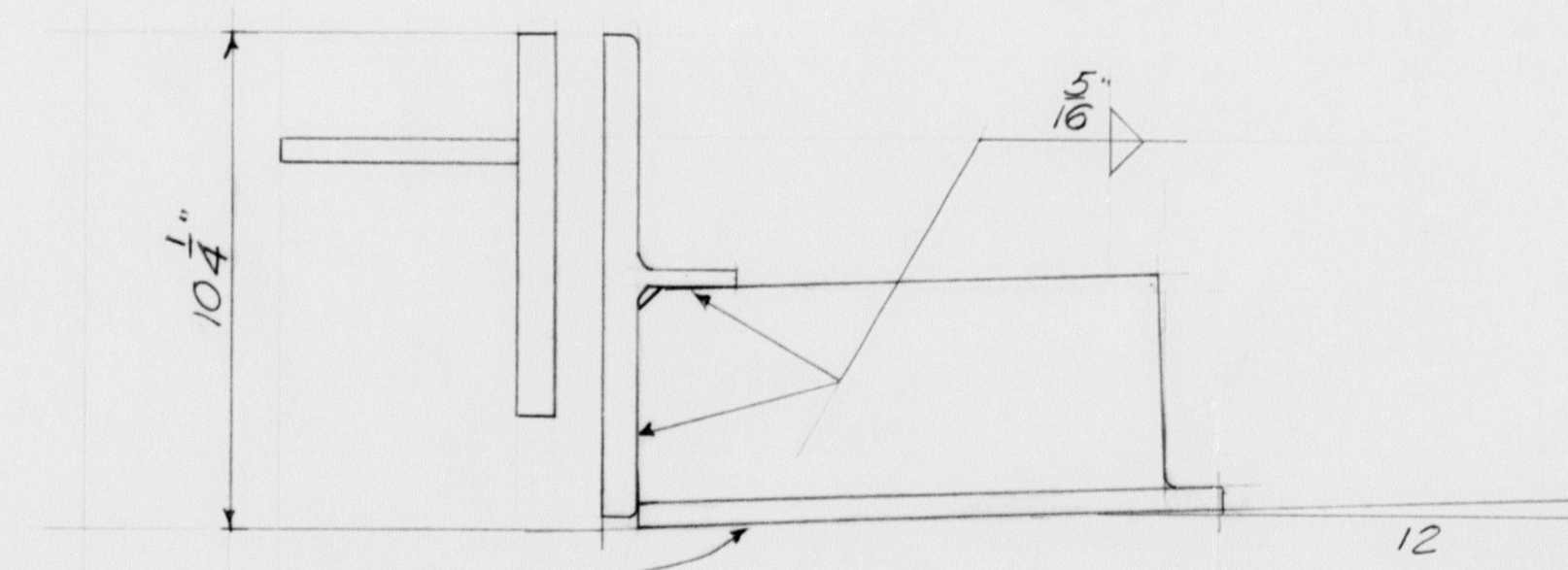
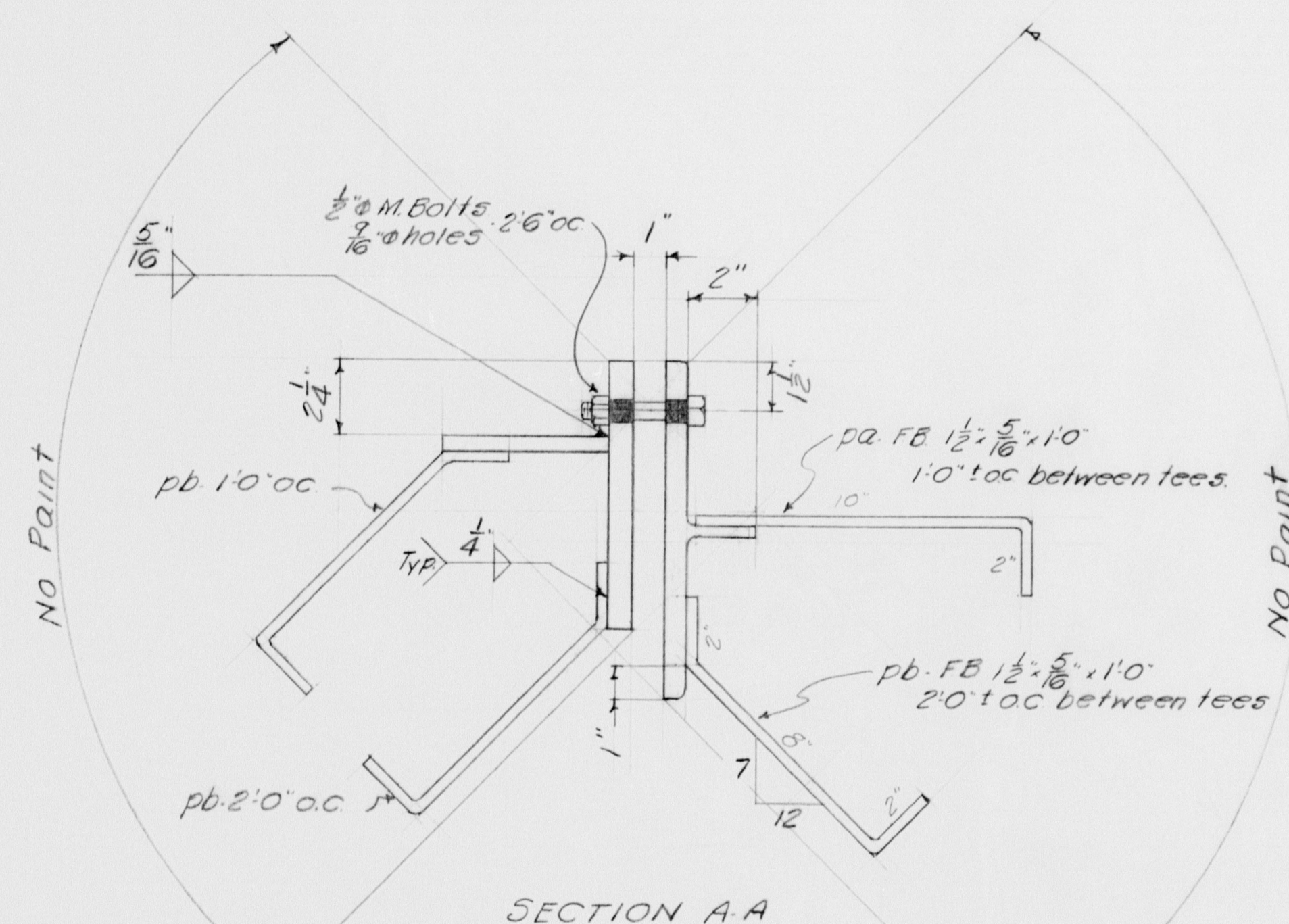
DRAWN	121958 PLF
REVISION	
REVISION	
REVISION	

DIAPHRAGMS	
Bancroft & Martin Rolling Mills Company South Portland, Maine	
DEPOT ROAD OVER INTERSTATE FALMOUTH, ME.	
CUSTOMER	E.C. SNODGRASS
DESIGNER	M.S.H.C.
ORDER NO.	DWG. NO. 8-411-511





EXPANSION DAM  
WEST ABUTMENT



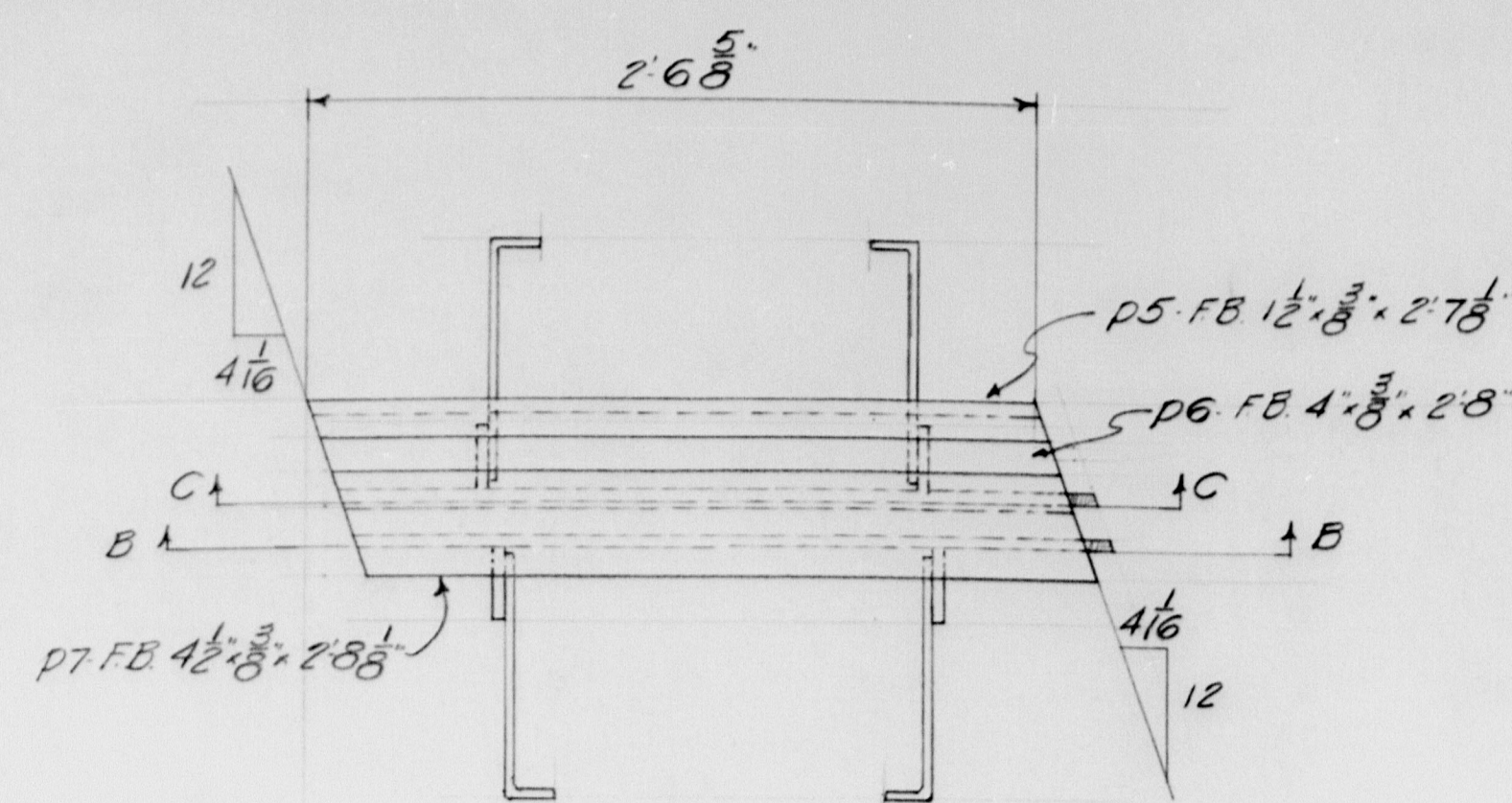
SHIP		BILL OF MATERIAL					DWG. NO. 8-411-512	
MARK	NO.	MARK	SHAPE	LENGTH	WT.	W.T. DEDUCTION	REMARKS	
2nd DAY NEXT DAY	1		Shop Assembly	—				
	1	t1	ST 5W F30	16 $1\frac{13}{16}$		62		
	1	t2	do	16 $1\frac{1}{2}$		64		
	5	T1	ST 5W F195	1 $0\frac{3}{4}$		16		
	1	p1	FB $8 \times \frac{1}{2}$	16 $1\frac{1}{2}$		1		
	1	p2	do	16 $1\frac{1}{2}$		4		
	1	p3	FB $5 \times \frac{1}{2}$	16 $2\frac{1}{2}$		1		
	1	p4	do	16 $2\frac{1}{2}$		1		
	2	p5	FB $1\frac{1}{2} \times 3\frac{1}{2}$	2 $7\frac{1}{2}$				
	2	p6	FB $4 \times 3\frac{1}{2}$	2 $8\frac{1}{2}$		1		
	2	p7	FB $4\frac{1}{2} \times 3\frac{1}{2}$	2 $8\frac{1}{2}$		1		
	1	p8	FB $9\frac{1}{2} \times \frac{1}{2}$	2 $7\frac{1}{2}$		3		
	1	p9	do	2 $7\frac{1}{2}$		3		
	1	p10	FB $9\frac{1}{2} \times \frac{1}{2}$	2 $7\frac{1}{2}$		5		
	1	p11	do	2 $7\frac{1}{2}$		3		
	1	p12	FB $3 \times \frac{1}{2}$	1 $2\frac{1}{2}$				
	1	p13	do	1 $1\frac{1}{2}$				
	1	p14	do	0 $1\frac{1}{2}$				
	1	p15	do	0 $10\frac{11}{16}$				
	1	p16	do	1 $1\frac{1}{2}$				
	1	p17	do	1 $2\frac{3}{4}$				
	1	p18	do	0 $10\frac{3}{4}$				
	1	p19	do	0 $11\frac{1}{2}$				
SHIP A	5		FB $8 \times \frac{1}{2}$	0 $8\frac{1}{2}$		1		
SHIP B	10		FB $8 \times \frac{1}{2}$	0 $8\frac{1}{2}$		1		
SHIP C	5		FB $8 \times \frac{1}{2}$	0 $8\frac{1}{2}$				
	36	pa	FB $1\frac{1}{2} \times \frac{2}{16}$	1 $0\frac{1}{2}$				
	64	pb	do	1 $0\frac{1}{2}$				
	18	Shop	$\frac{1}{2}$ M. Bolt	0 $3\frac{1}{2}$				
Field	20		$\frac{3}{4}$ M. Bolt	0 $3\frac{1}{2}$				
	1	Shop	1. fillet weld	63 $0\frac{1}{2}$			.107" / ft	
	1	do	5. fillet weld	100 $0\frac{1}{2}$			.166" / ft	

SHOP CONNECTIONS: *Welded*  
FIELD CONNECTIONS: *1/2" M. Bolts*  
HOLES: *A5 Noted*  
PAINT: *Red Lead unless noted*  
*See Draw 8-411-513 for additional details*

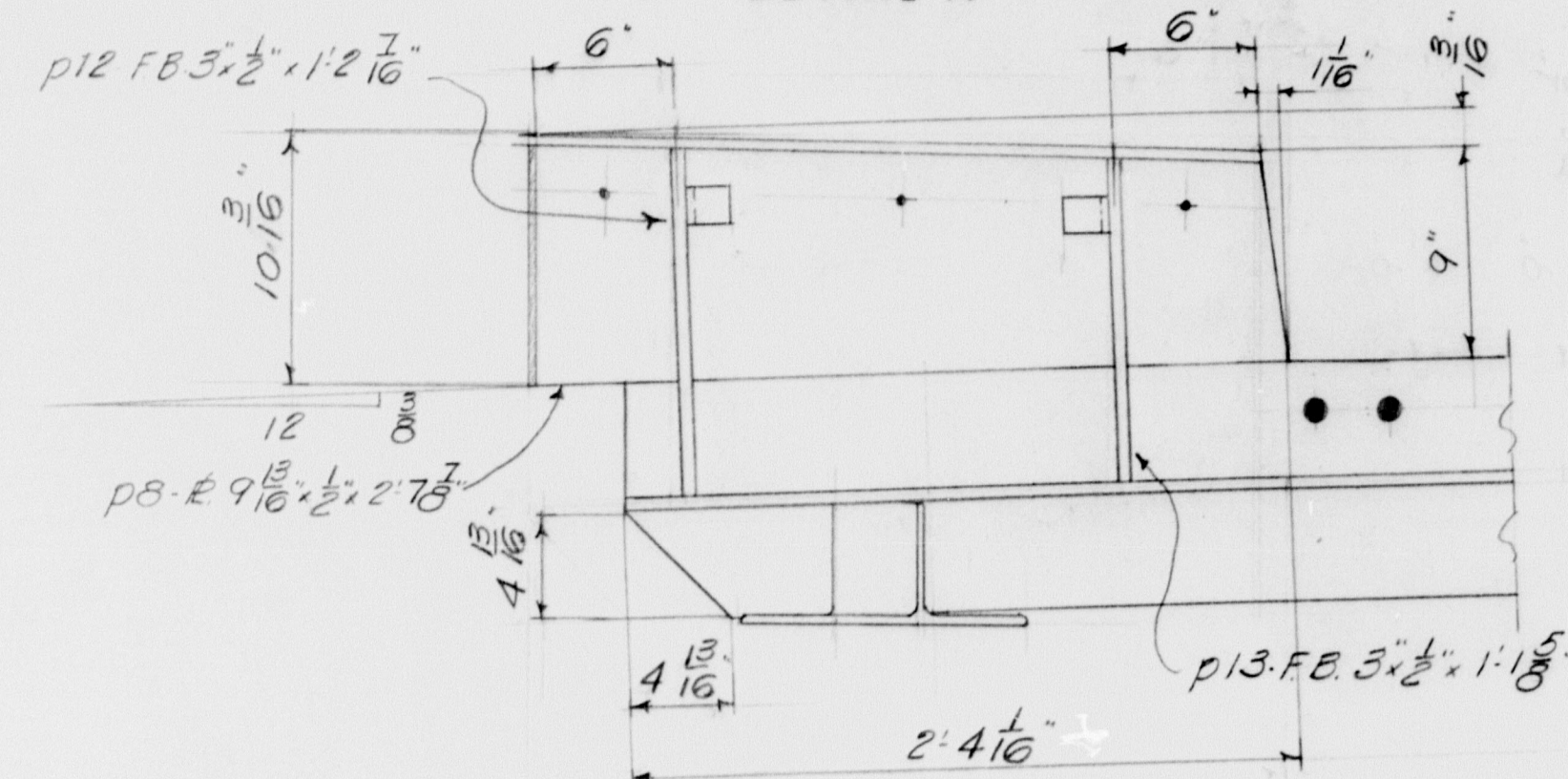
APP 1-14-50

APP. 1-14-59	EXPANSION DAM	
	Bramcraft & Martin Rolling Mills Company	
	South Portland 7, Maine	
	DEPOT ROAD OVER INTERSTATE FALMOUTH, MAINE	
7	CUSTOMER	EC SNODGRASS, INC
	DESIGNER	M.S.H.C.
	ORDER NO. _____	DWG. NO. 8-411-512

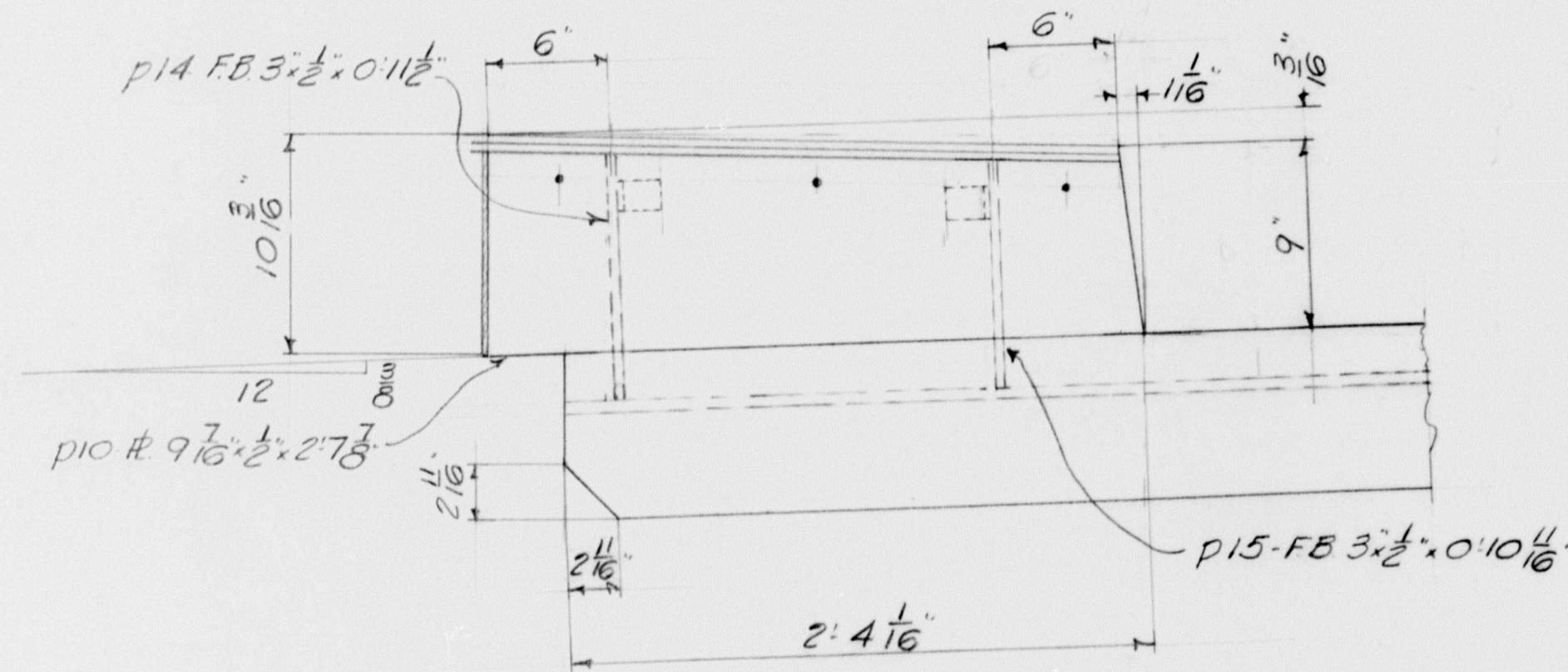




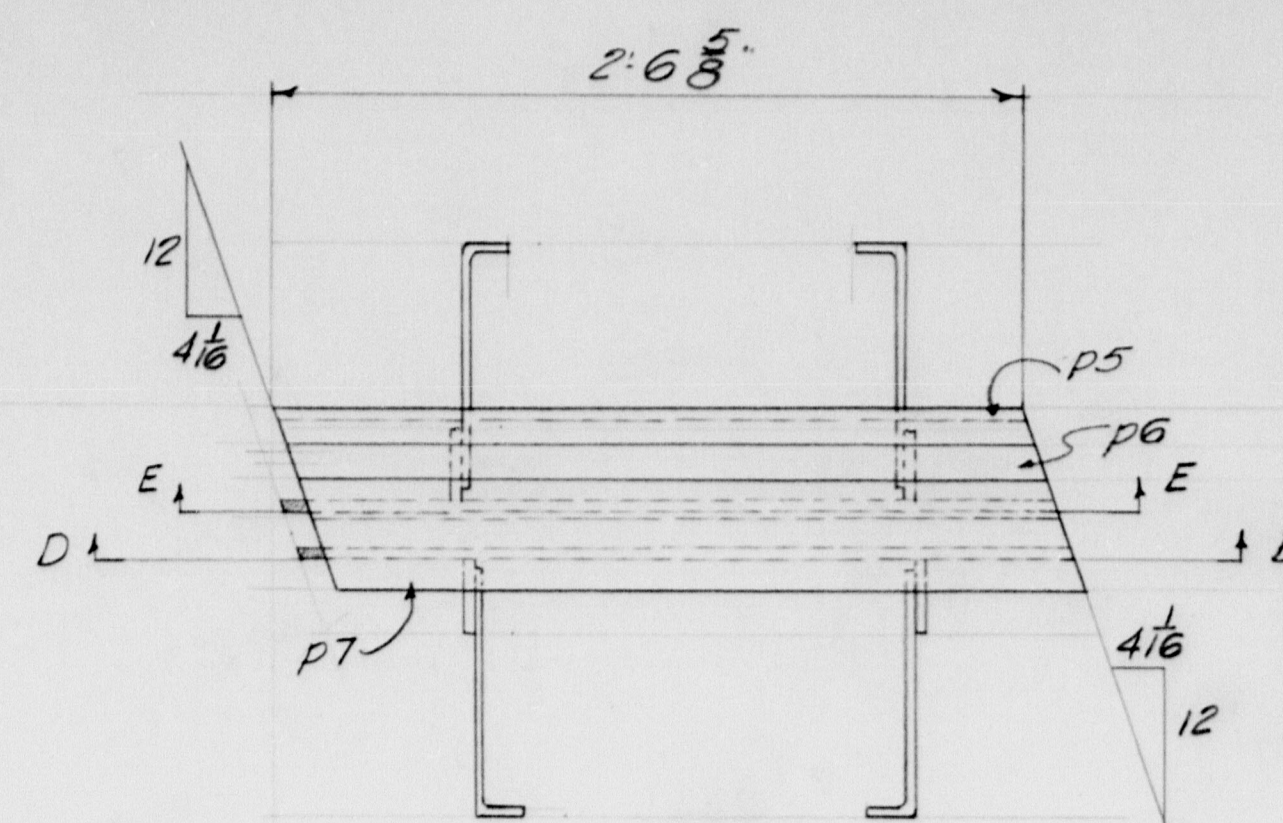
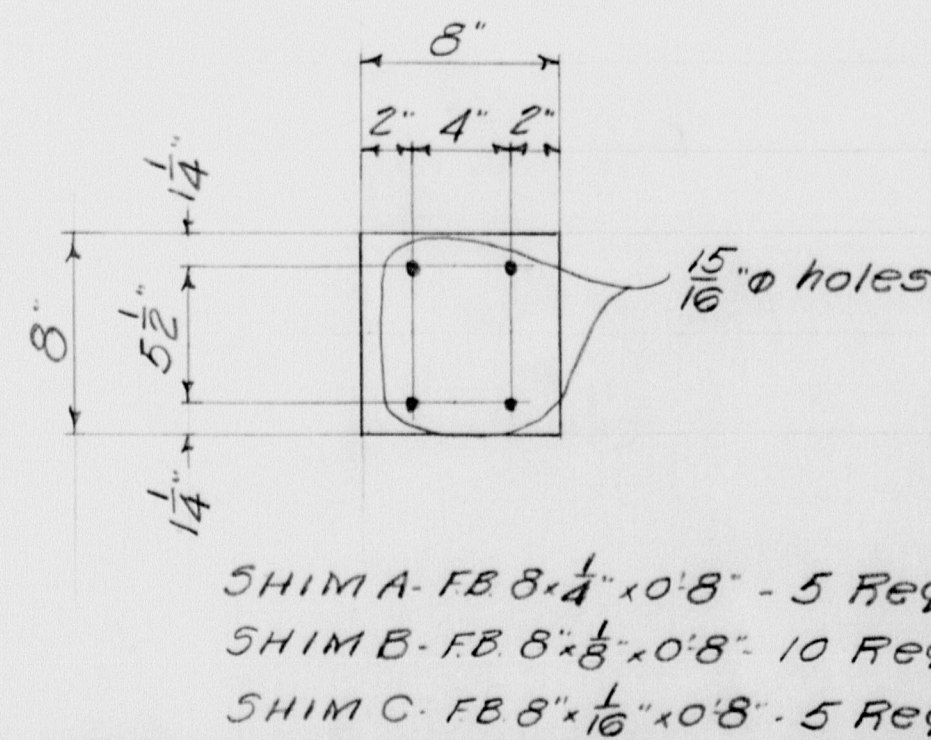
PLAN  
DETAIL A



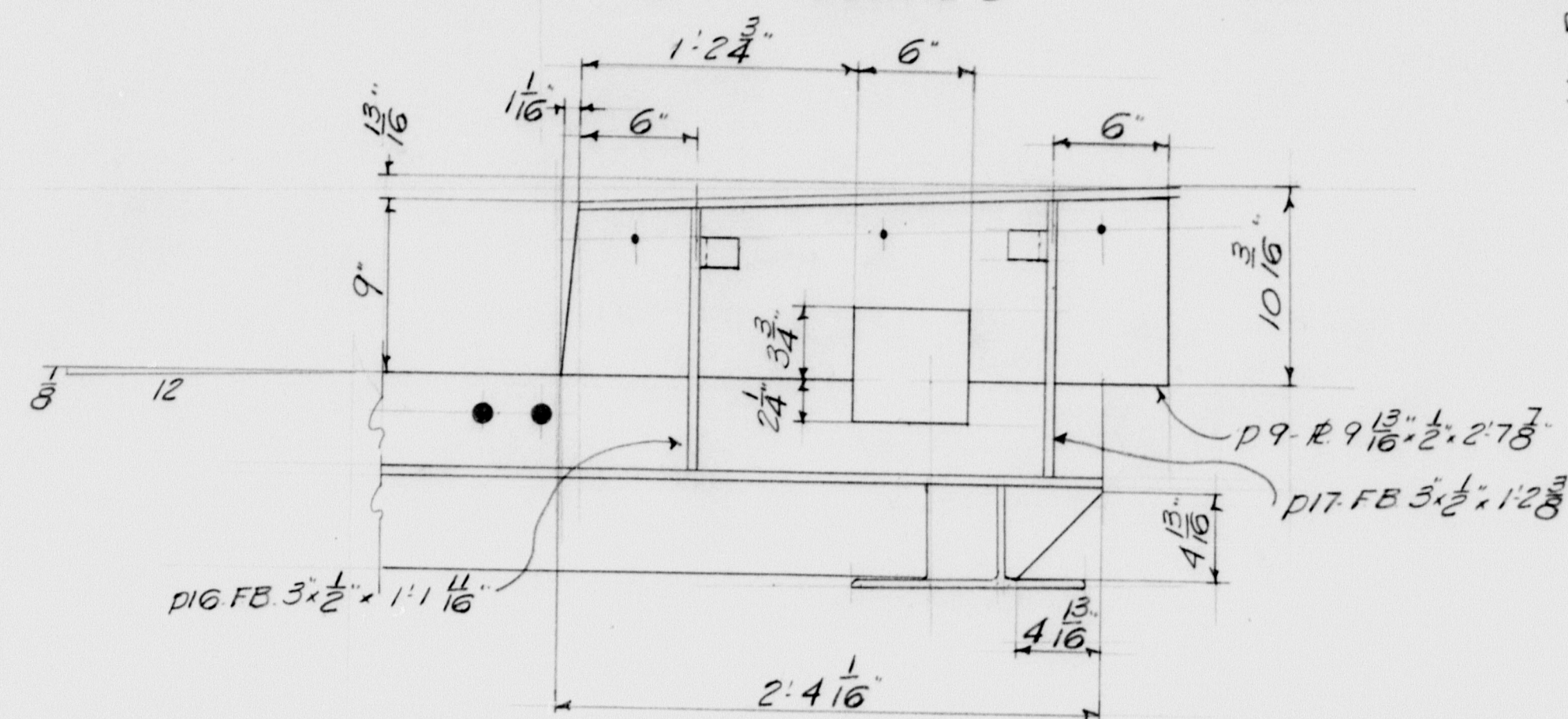
SECTION B-B



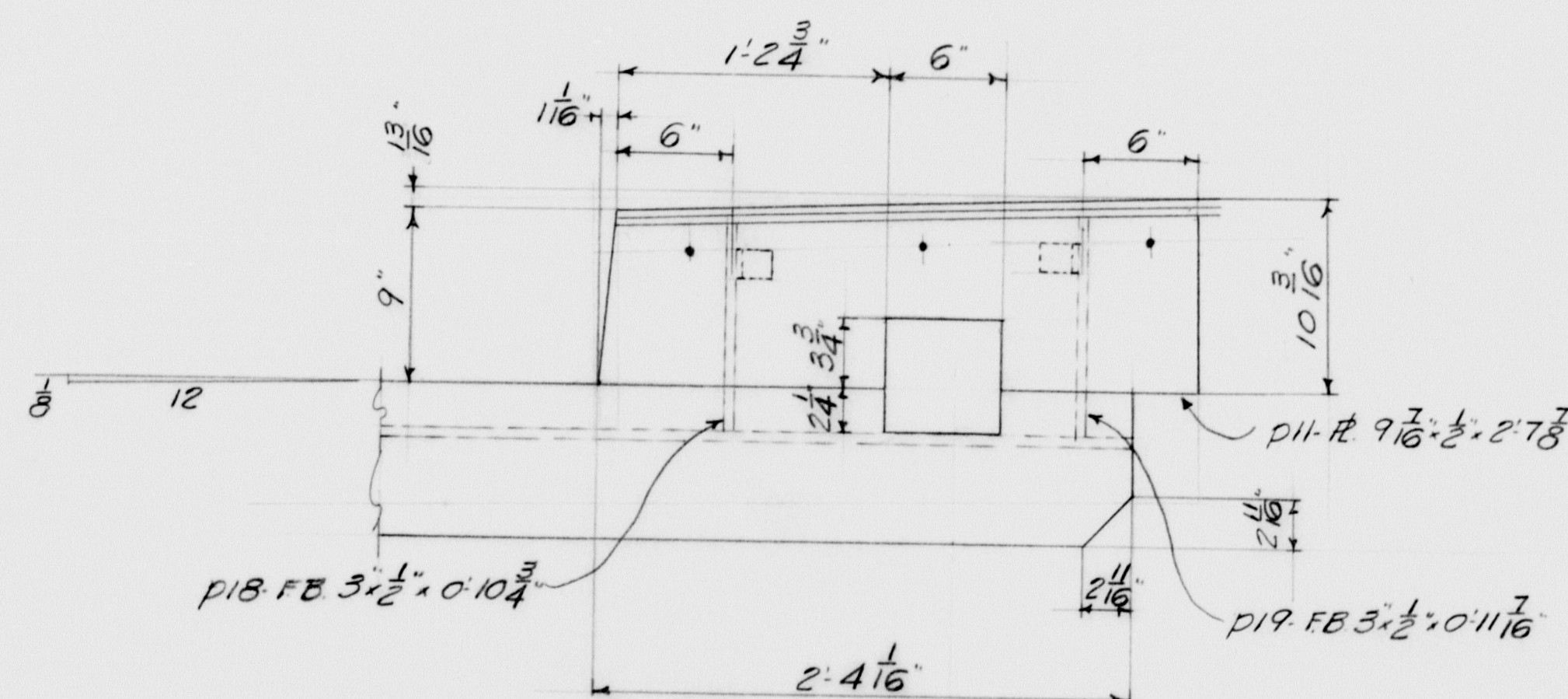
SECTION C-C



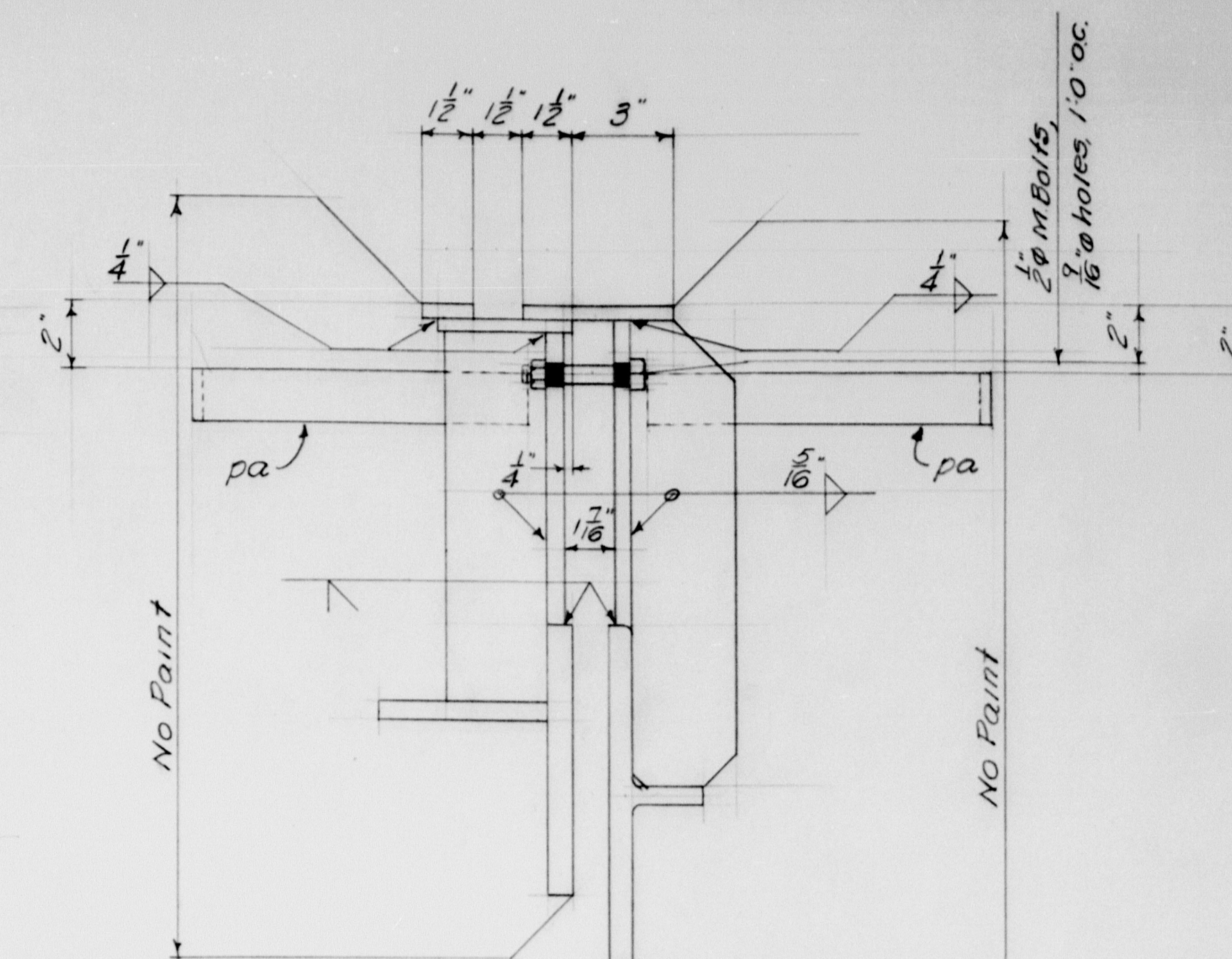
PLAN  
DETAIL B



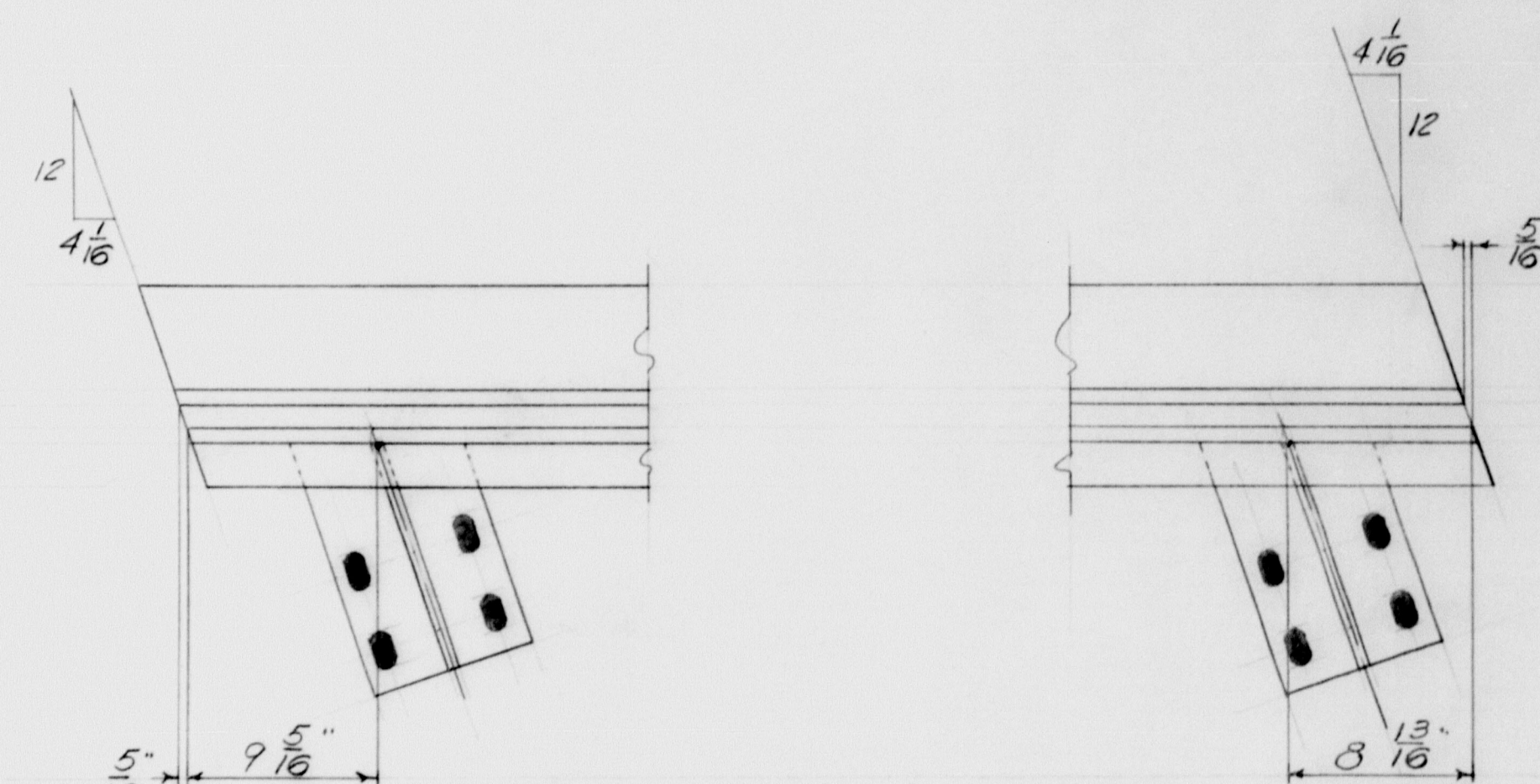
SECTION D-D



SECTION E-E



TYPICAL SECTION FOR DETAIL A & DETAIL B



PLAN DETAIL C ENDS

NOTES:  
Work this drawing with DWG. 8-411-512

EXPANSION DAM	
Bancroft & Martin Rolling Mills Company	
South Portland 7, Maine	
DEPOT ROAD OVER INTERSTATE FALMOUTH, ME	
CUSTOMER E.C. SNODGRASS, INC.	
DESIGNER M.S.H.C.	
ORDER NO. _____	DWG. NO. 8-411-513

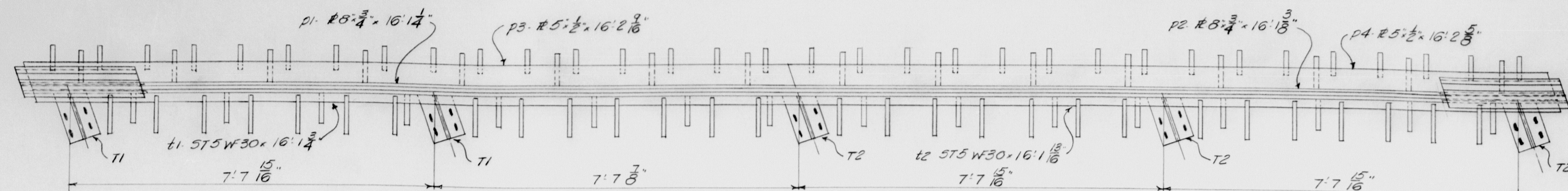
APP 1-14-59

DRAWN	1231-58 P.L.F.
REVISION	
REVISION	
REVISION	

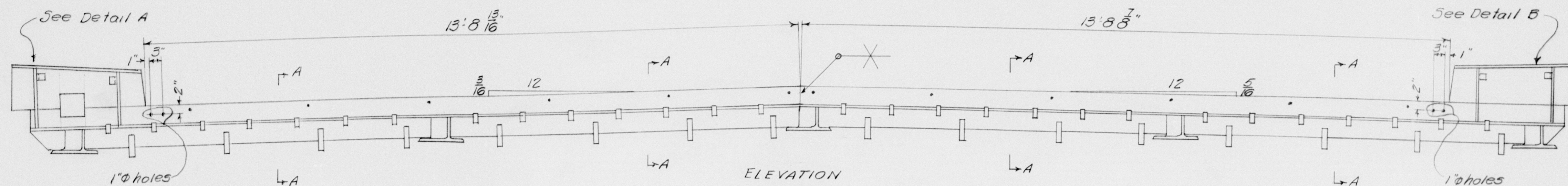
ekdd

73-78



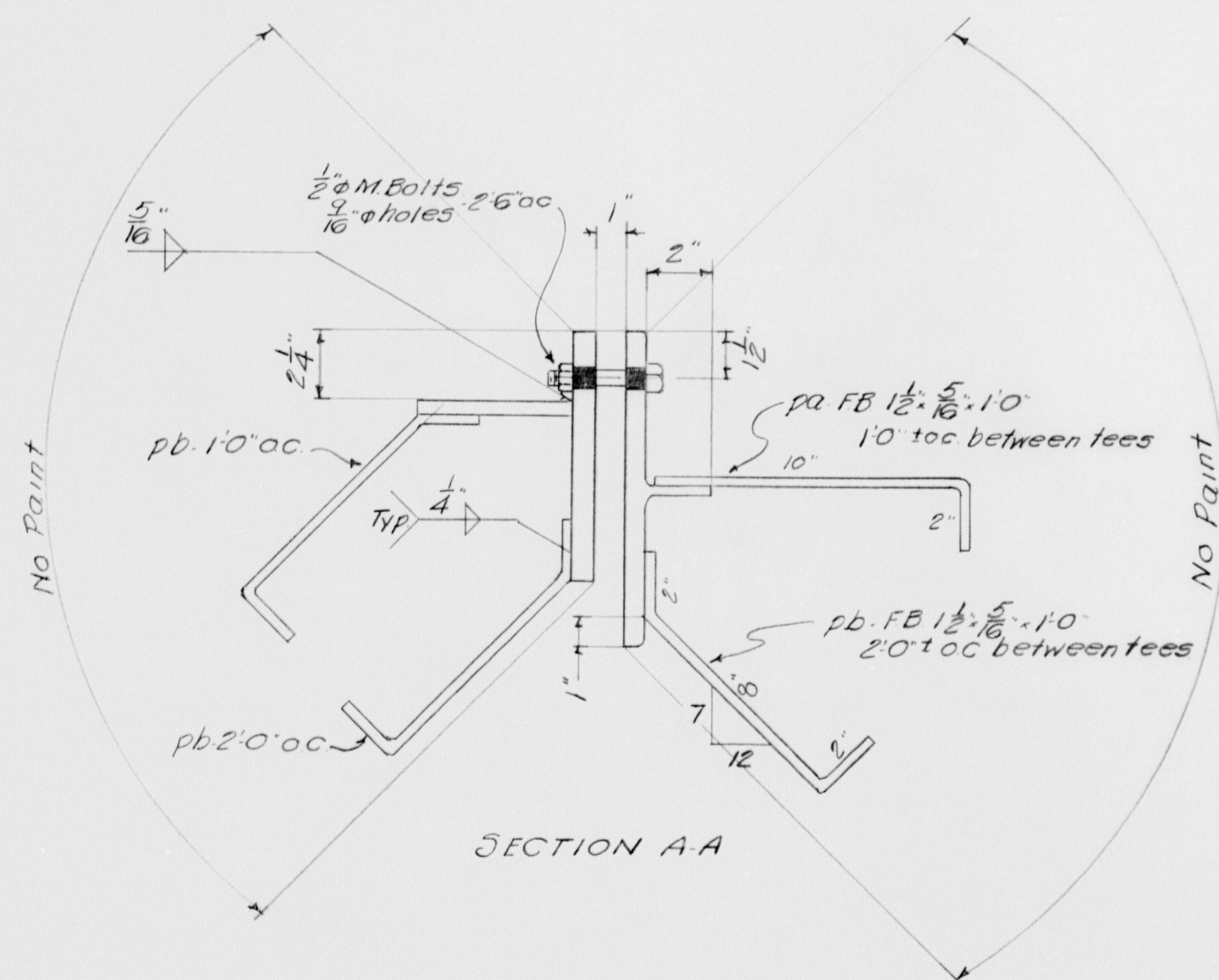


PLAN

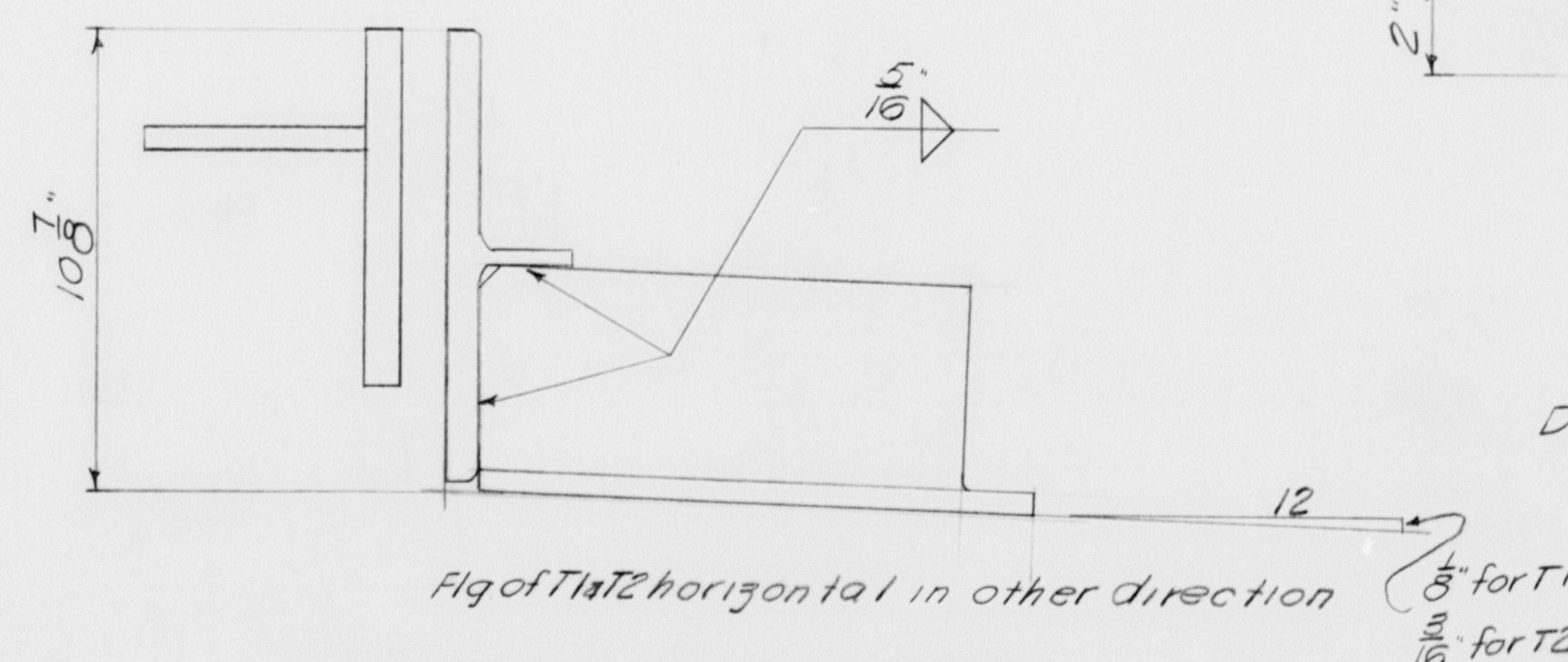


ELEVATION

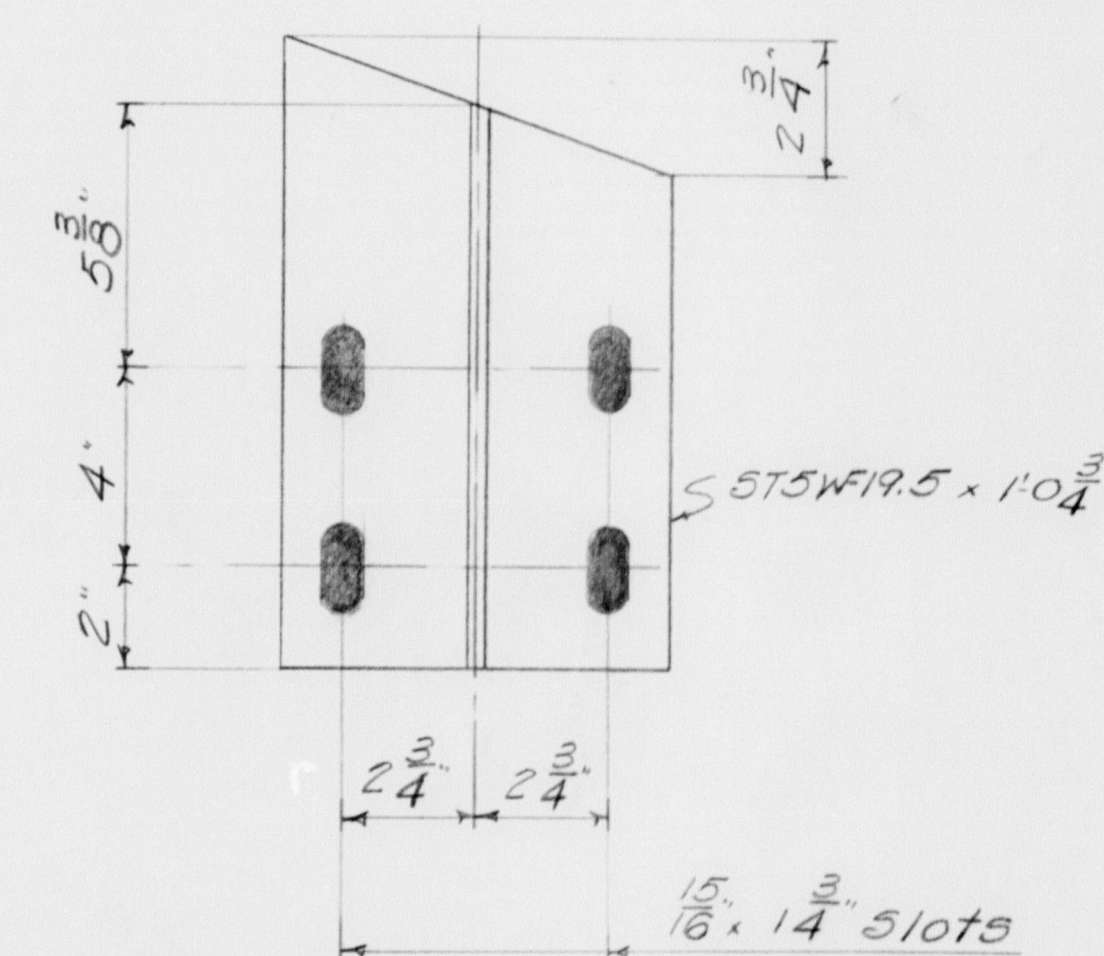
EXPANSION DAM  
EAST ABUTMENT



SECTION A-A



TYPICAL SECTION GT1#T2



DETAIL OF T1#T2

SHIP		BILL OF MATERIAL				DWG. NO. 8-411-514	
MARK	NO.	MARK	SHAPE	LENGTH	WT.	WT. DEDUCTION	REMARKS
EXP. DAM EAST ABUT.	1		Shop Assembly				
	1	t1	5T5WF30	16' 1 1/2"	64		
	1	t2	do	16' 1 1/2"	62		
	2	T1	5T5WF19.5	1' 0 3/4"	6		
	3	T2	do	1' 0 3/4"	9		
	1	p1	#8 x 3/4"	16' 1 1/2"	4		
	1	p2	do	16' 1 1/2"	1		
	1	p3	#5 x 1/2"	16' 2 3/8"	1		
	1	p4	do	16' 2 3/8"	1		
	2	p5	FB 12 x 3	2' 7 1/2"			
	2	p6	FB 4 x 3	2' 8"			
	2	p7	FB 4 x 3	2' 8 1/2"			
	1	p8	#2 x 1/2"	2' 7 1/2"	3		
	1	p9	#9 x 1/2"	2' 7 1/2"	3		
	1	p10	#9 x 1/2"	2' 7 1/2"	3		
	1	p11	#9 x 1/2"	2' 7 1/2"	5		
	1	p12	FB 5 x 3	1' 2 3/4"			
	1	p13	do	1' 1 1/2"			
	1	p14	do	0' 11 1/2"			
	1	p15	do	0' 10 3/4"			
	1	p16	do	1' 1 1/2"			
	1	p17	do	1' 2 3/4"			
	1	p18	do	0' 10 3/4"			
	1	p19	do	0' 11 1/2"			
SHIP A	5		FB 8 x 4	0' 8"	1		
SHIP B	10		FB 8 x 5	0' 8"	1		
SHIP C	5		FB 8 x 6	0' 8"			
	36	p2	FB 12 x 3	1' 0"			
	64	FB	do	1' 0"			
	18	Shop	1/2" M. Bolt	0' 3 1/2"			
Field	20		3/4" M. Bolt	0' 3"			
	1	Shop	1/4" fillet weld	63' 0"			.107' / ft.
	1	do	1/2" fillet weld	100' 0"			.166' / ft.

SHOP CONNECTIONS: Welded  
FIELD CONNECTIONS: 3/4" M. Bolts  
HOLES: As Noted  
PAINT: Red Lead unless noted  
See Dwg. 8-411-515 for additional details

EXPANSION DAM	
Bancroft & Martin Rolling Mills Company	
South Portland 7, Maine	
DEPOT ROAD OVER INTERSTATE FALMOUTH, ME	
CUSTOMER EC SHODGRASS, INC.	
DESIGNER M. S. H. C.	
ORDER NO.	DWG. NO. 8-411-514

DRAWN	1-259 PLF
REVISION	
REVISION	
REVISION	

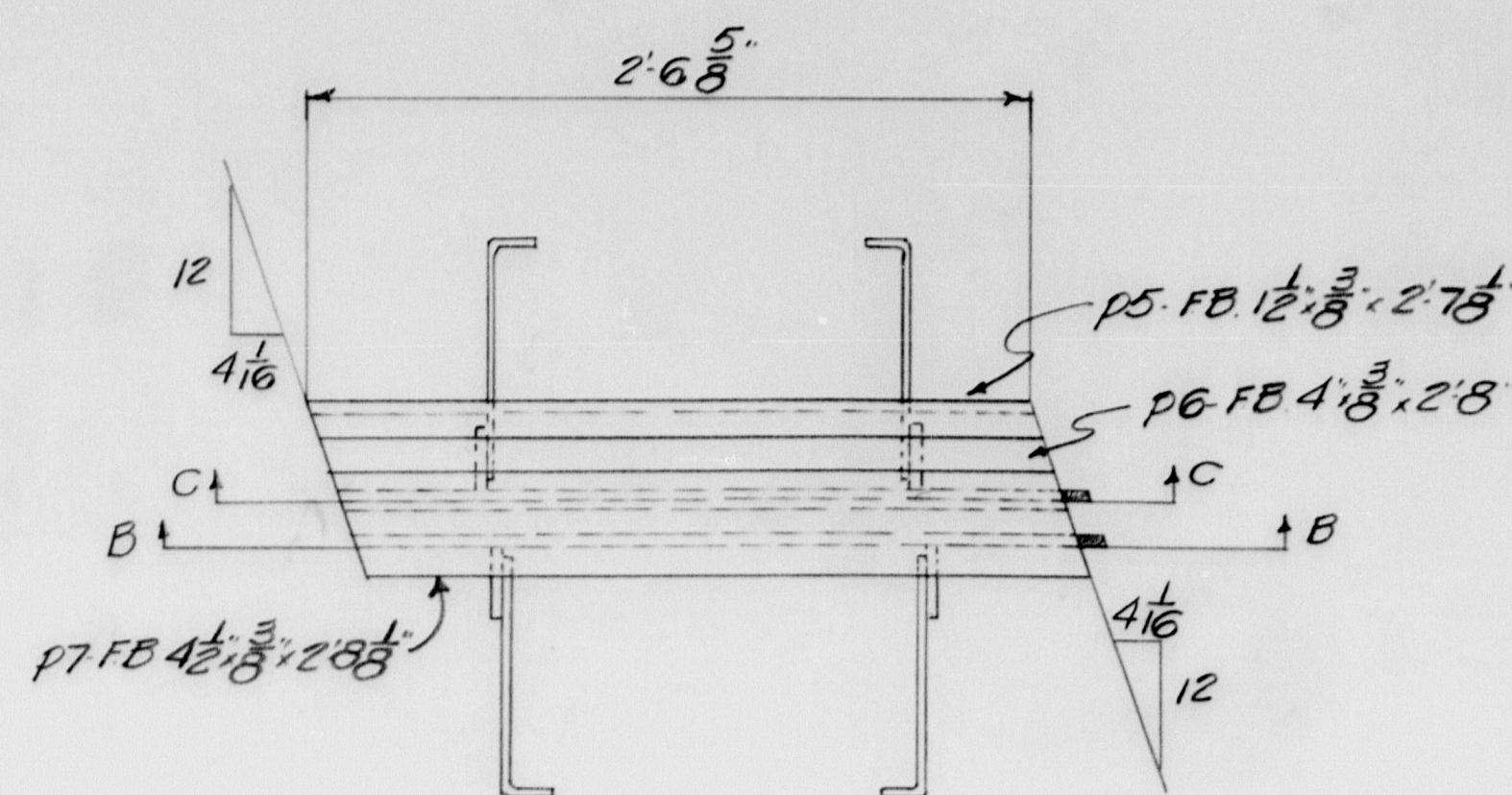
APP. 1-14-59

chd

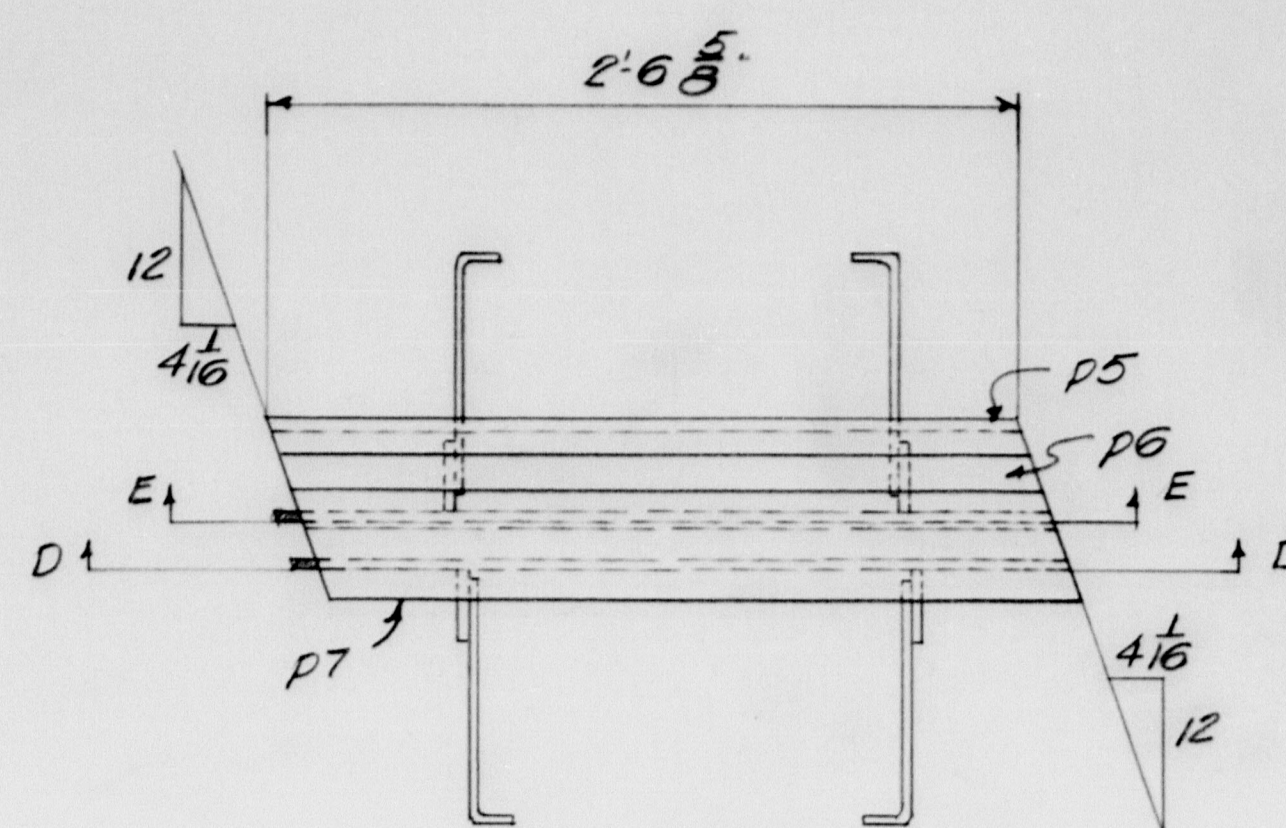
7279-78

0 1 2 3 4 5 INCHES

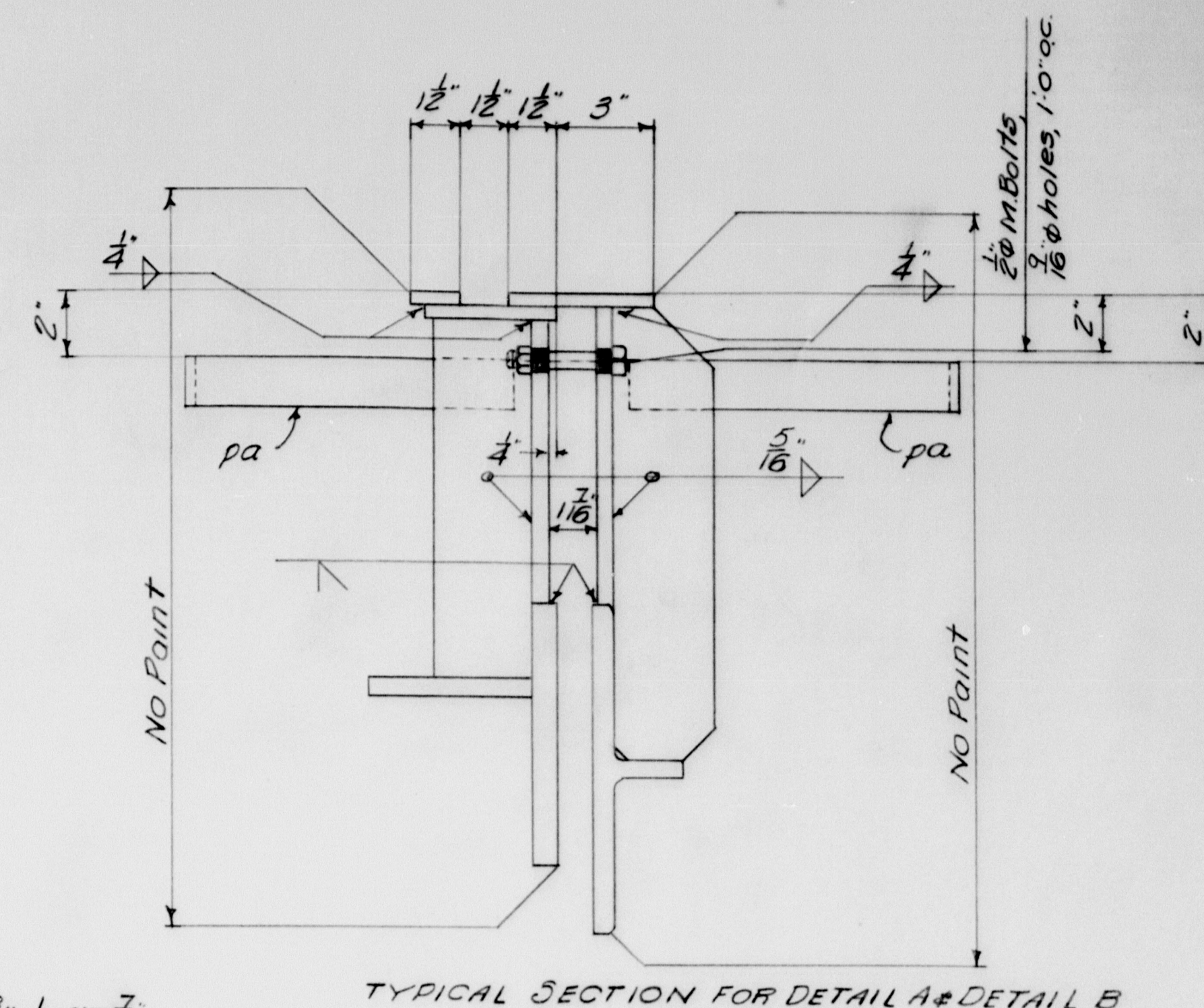




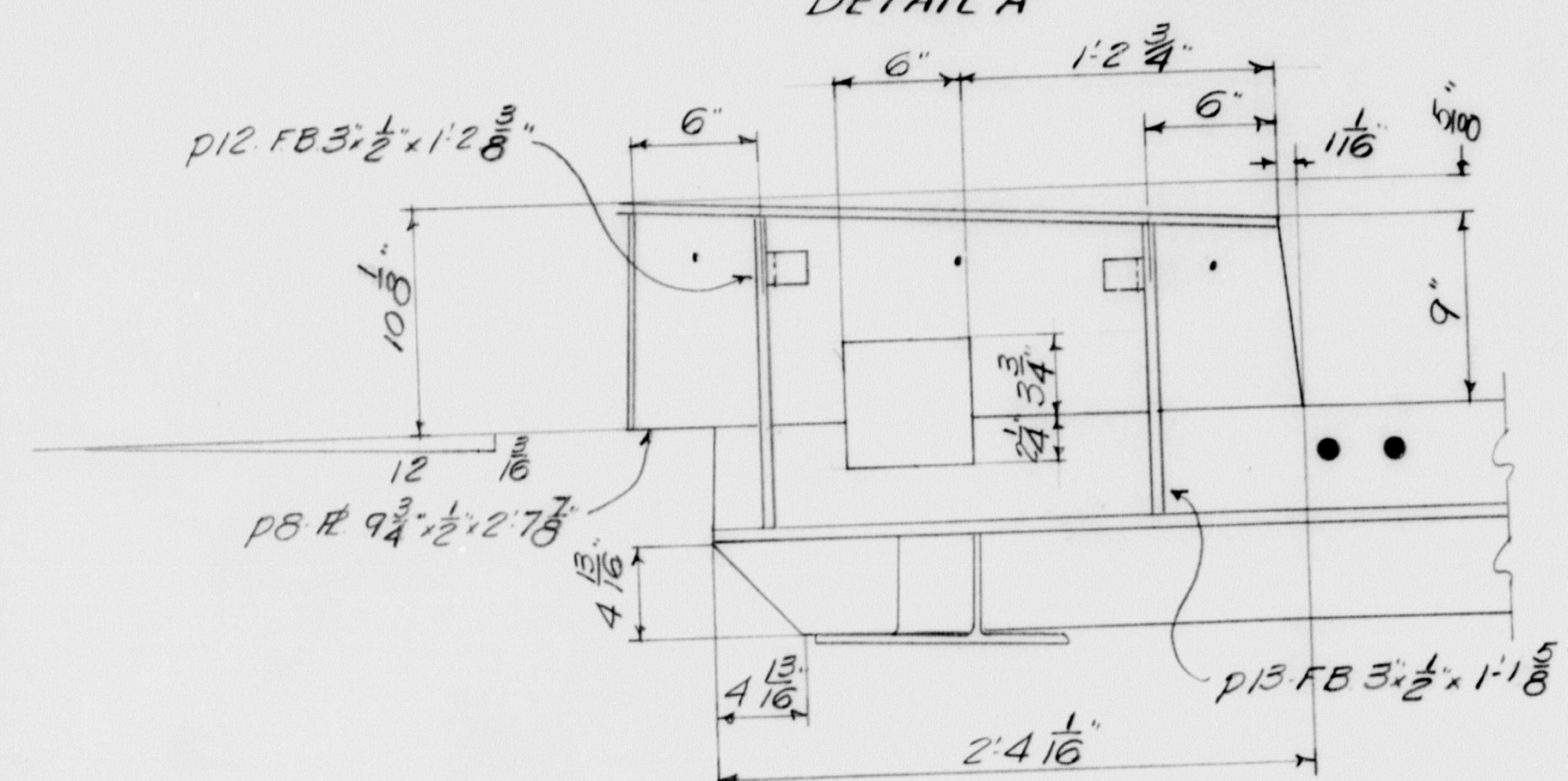
PLAN  
DETAIL A



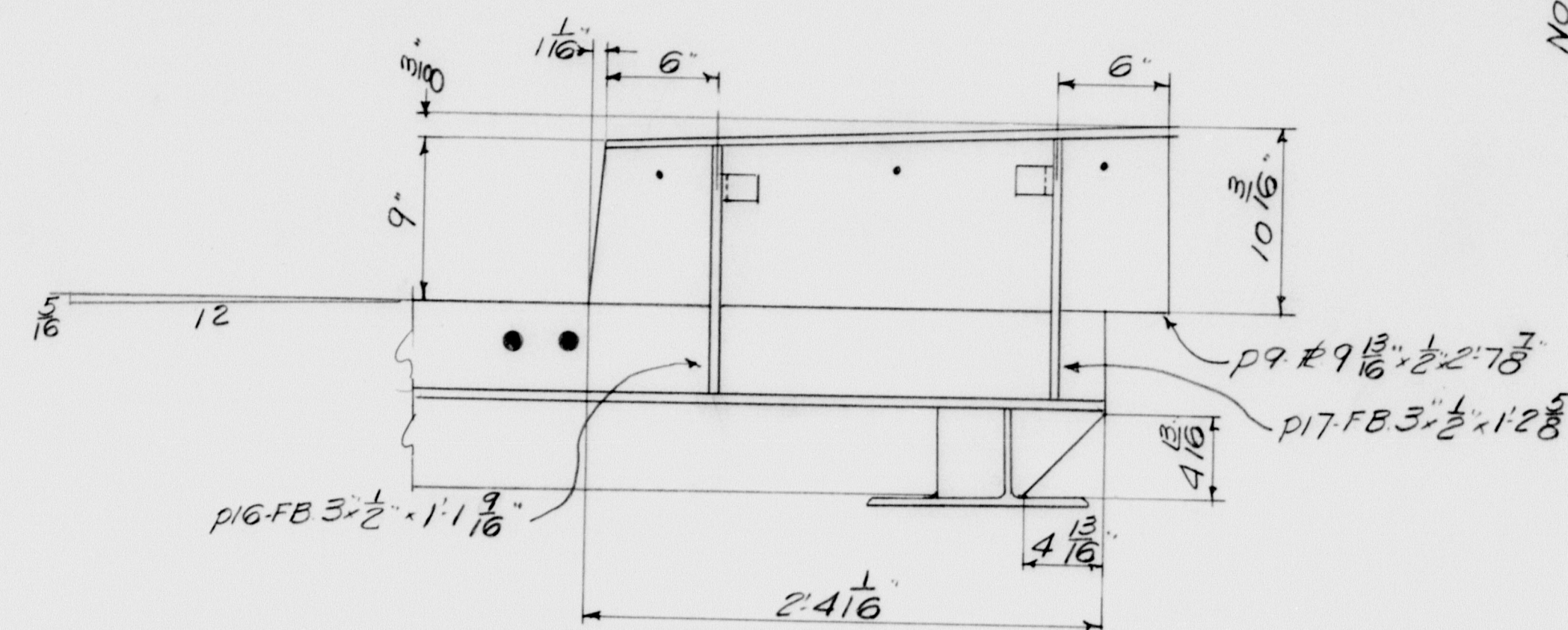
PLAN  
DETAIL B



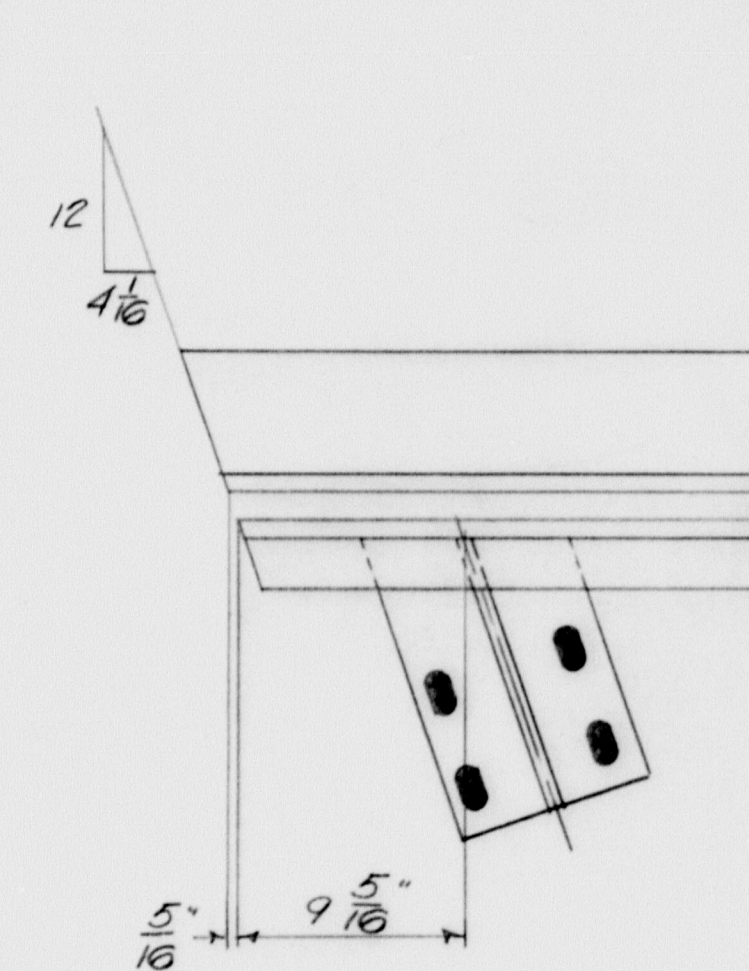
TYPICAL SECTION FOR DETAIL A & DETAIL B



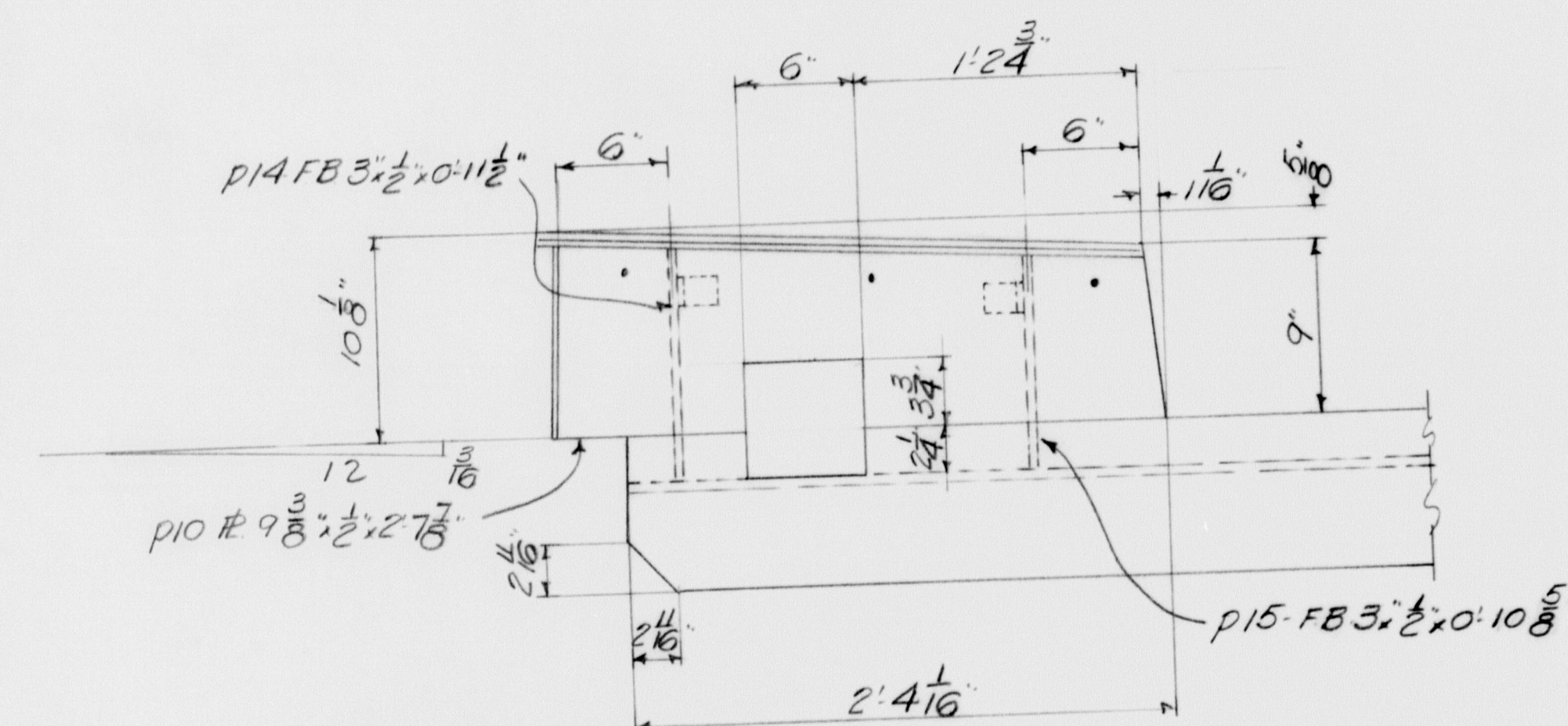
SECTION B-B



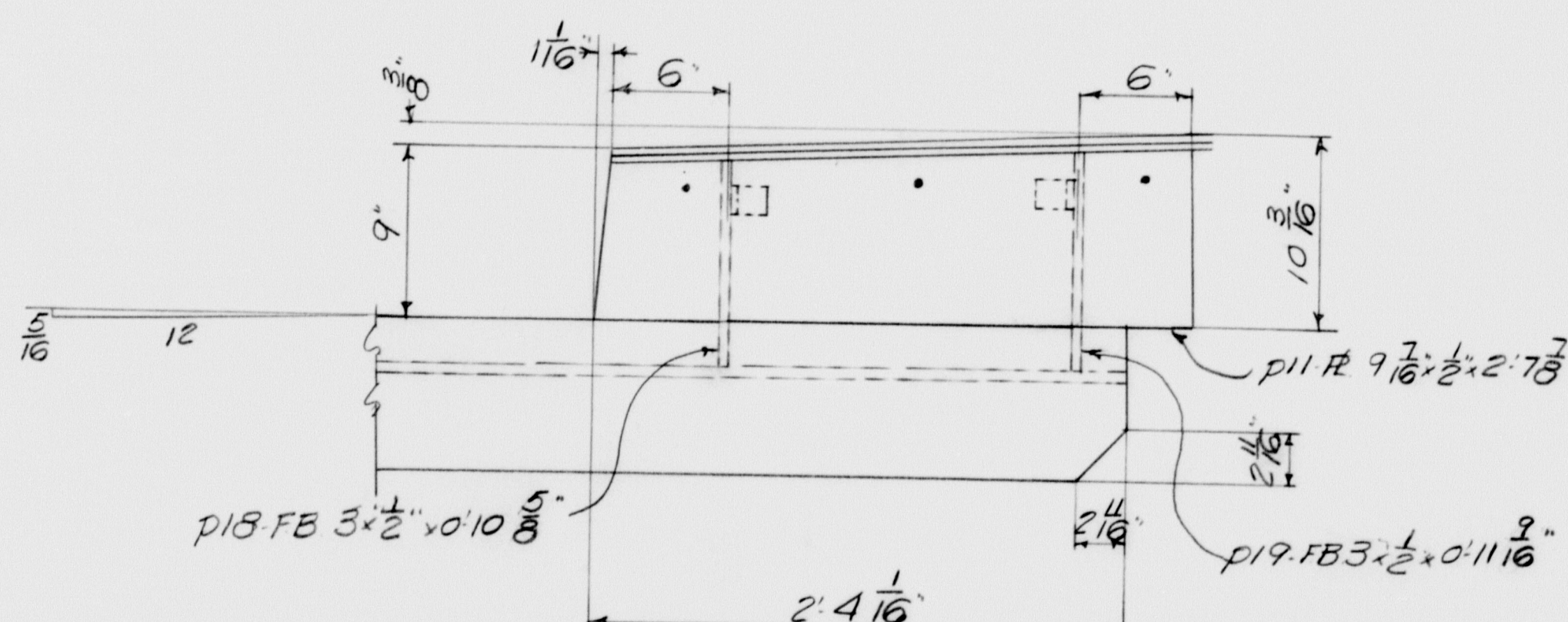
SECTION D-D



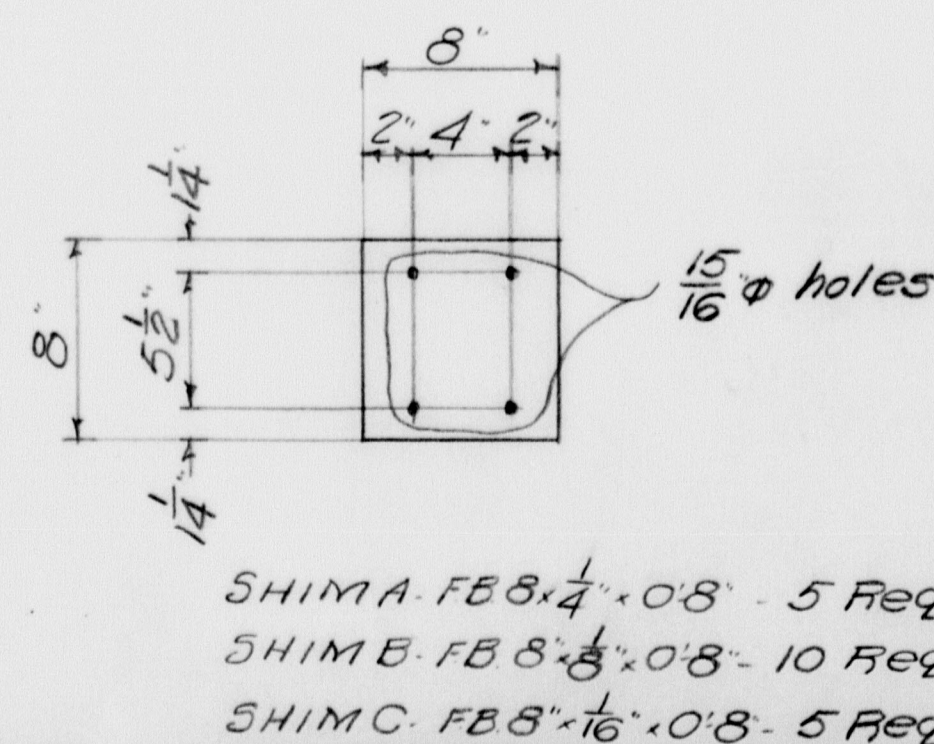
PLAN DETAIL GENDS



SECTION C-C



SECTION E-E



NOTES:  
Work this drawing with DWG 3-411-514

APR 11/4/59

EXPANSION DAM	
Bancroft & Martin Rolling Mills Company	
South Portland 7, Maine	
DEPOT ROAD OVER INTERSTATE	
FALMOUTH, ME	
CUSTOMER E.C. SNODGRASS, INC.	
DESIGNER M.S.H.C.	
ORDER NO. _____	DWG. NO. 3-411-515

DRAWN	1259	PLF
REVISION		
REVISION		
REVISION		

73-80